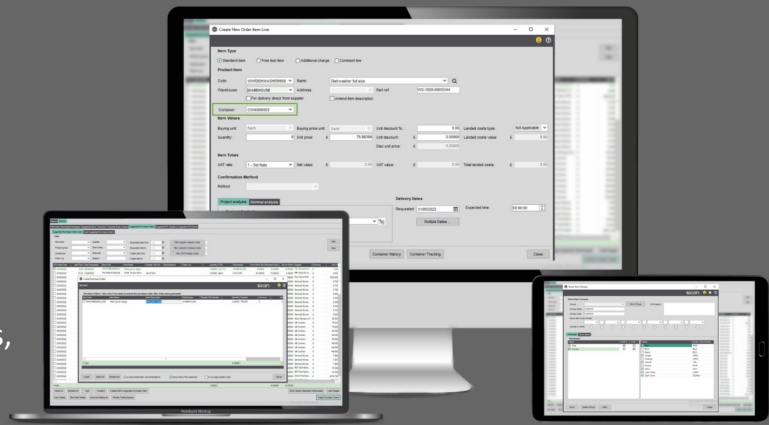




Stock management, onboarding of new customer orders, container visibility, demand based purchasing and the management of warehouse replenishment.



Distribution for Sage 200

Key Product Functionality

Warehouse Replenishment

- Assist with the transfer of stock between Warehouse locations, and the replenishment of Warehouse locations based on their Minimum Stock levels.
- Stock Shortage Transfers greatly enhances the standard Sage Transfer Stock option to move stock between Warehouses. It provides a means of allocating stock, printing a picking list, despatching it (with a despatch note) and moving it to an In Transit Warehouse before receiving at the destination Warehouse.
- Stock Replenishments allows for the system to suggest replenishments from one Warehouse to another based on minimum levels set on the Warehouse. You can select a source Warehouse to supply the stock and a destination Warehouse that needs replenishing.
- The Transfer Small Stock Item Batches allows the User to easily deal with batches that remain in stock, but are unlikely to be able to be sold or used because they are too small in size.

Material Planning

NB: does not include Capacity Planning.

- Material Planning creates suggested purchase orders for stock shortages based on supplier lead times and min order quantities, min stock levels, unallocated sales orders and imported sales forecasts.
- Forecasts can be entered into the system to reflect expected sales orders and create demand for them. As actual sales orders are placed, then this forecast can be reduced via a prompt displayed when the order is saved.
- Supplier prices based on quantity breaks are reflected in the MRP prices.
- (NB: requires the addition of Sicon Enhancement Pack or Sicon Distribution POP Management)

Reserves & Call Offs

- **Contracts** can be linked to Sales/Purchase Orders and reduced down at Order Entry, pulling through the Contract price to the Order. Where Sicon MRP is installed, there is an option to include. Contracts when running MRP and Suggested Purchase Orders can use the Contract price.
- **Reserves** can allocate stock for a Customer without the need of a Sales Order, or simply allocate stock as a Stock Item Reserve. Where Sicon MRP is installed, if a Reserve has been created but no Free Stock is available for allocation, a Purchase Order Suggestion will be created or, where Sicon WOP is also installed, a Suggested Works Order will be created if the stock is built item.

Licencing Summary

Installed and maintained within Sage 200, using Sage 200 user licences with no Sicon specific user licences required.

Reports are designed within Sage 200 using the built in Sage 200 report designer, meaning they can be amended to provide custom versions of the reports.

Written within the Sage 200 development environment using the Sage business objects and utilising the latest Microsoft technologies for user interface.

When Sicon Construction is installed, the Sage features are updated and these can be added to the Sage user menu's using the Sage System Administration tools.

Available to all Sage 200 users across all Sage companies at no extra cost.

No Sicon user licences required.

Find out more....

To find out more about Sicon Distribution, please contact your Sage Business Partner or contact Sicon direct on **01284 722850**.

Future Sales

- **Calculate Minimum Stock:** allows the calculation of suggested Stock Item Minimum Stock levels per warehouse, based on usage over the previous 3 months (or specified date range). The usage value includes Sales plus any BOM, Sicon Works Orders or Internal Issues in the stock module. Lost Orders can also be included. (NB: some functionality requires the addition of Sage 200 BOM, Sicon WOP and Sicon Distribution SOP Management).
- Create Sales Forecasts uses historical usage to calculate a Forecast. The calculation will look at the previous year's usage and, using the comparison range in Distribution Settings, calculate a % increase or reduction. i.e. (the last 3 months usage / the same three months previous year) * the month you are calculating usage last year.

Pre-Allocation Management

- Link purchase orders with sales orders to ensure immediate allocation at goods in.
- Allows users to edit and manage all current pre-allocations.
- Change fulfilment functionality allows you to easily change the standard three Sage fulfilment methods (from stock, supplier via stock and direct to customer).

POP Management

- Enhancement for purchasing including supplier delivery KPI's, inspection of goods, expanded landed costs, supplier qty breaks and min order values.
- Advanced 'Landed Costs': With enhancements to the standard Sage functionality, you can break Landed Costs down into more detailed types and have Landed Costs posting to multiple nominal codes, to reflect the breakdown of the costs.
- View and filter expected PO deliveries by date and time.
- Supplier Catalogues can be created, enabling speedy entry of Free Text items (e.g. Consumables) from a pre-defined list.
- Supplier KPI's can be produced, showing KPI scores for Early, On Time, Late and Very Late deliveries.
- Values can be drilled into, in order to view individual Supplier Order lines and Stock Item KPI's.
- Stock Items can be flagged as requiring inspection on receipt, and will automatically be placed in an inspection area in the system.

Container Management

- Create tracking profiles that can be used on Purchase Orders or containers, with up to eight tracking stages available. Each tracking stage has an assigned number of days to complete, providing an estimate of the total number of days for that profile.
- Allows containers to be created and maintained; manage the full cycle of container creation, link lines from multiple Purchase Orders and manage the stages of loading, travel and customs clearance.
- Compare the provisional with actual dates, whilst updating all linked Purchase Order lines with the new estimated arrival date.
- When used in conjunction with the Sicon MRP Module, Stock Item weights and dimensions are used to calculate whether selected Suggested Purchase Orders exceed a containers Max Volume and Payload. (NB: functionality requires the addition of, Sicon MRP).

Stock Matrix

- Handling the creation of multiple stock items with pre-defined attributes, for example colour/size/style/season. Includes a grid style SOP/POP order entry for speed of processing.
- Users can define the format and attributes required for the Stock Codes and the system will generate each variation of the code.

Find out more....

To find out more about Sicon Distribution, please contact your Sage Business Partner or contact Sicon direct on **01284 722850**.

SOP Management

- **Show weight** | clicking on the show weight button, details the weight of the lines based on the weight set in the stock item analysis tab, when the 'Show Weight Radio Button' is enabled in the distribution settings.
- **Minimum Order Value (MOV)** | By setting this against the customer, the amount remaining will show when entering a Sales Order based on the MOV less the value of the Sales Order.
- **Add Historical Lines** | Enables a user to search for stock items ordered previously by the customer, using a range of months set in the distribution settings. When adding historical items, information on the last selling price, last quantity and date of last sale are all shown.
- **Copy Order Lines** | Enables a user to search for lines on previous Sales Orders in order to copy them onto the current Sales Order.
- **Telesales** | Provides a rapid alternative method for adding lines to a Sales Order in a way which is suitable for telephone selling.
- **Copy and Paste** | Stock code and quantity can be copied from Microsoft Excel and then entered into the Sales Order by clicking on the 'copy and paste' button.
- **Shipping** | Provides the facility to record shipping information for the order, including the shipping type, carrier, service, total weight, dimensions and date.
- **Save, Allocate & Despatch** | chains together the saving of the Sales Order with stock allocation and the opening of the standard Sage 200 Confirm Despatch Screen for final confirmation or adjustment.
- **Lost Orders** | Mark Sales Order lines as lost, alongside a reason, all from within the Sales Order. These can then be reviewed in an enquiry screen.
- **Manage SOP Back Orders** | Provides an option for rapid allocation and un-allocation of stock within Sales Orders without the need to open each Sales Order and order line.
- Complimentary, superseded & discontinued products.

Find out more....

To find out more about Sicon Distribution, please contact your Sage Business Partner or contact Sicon direct on **01284 722850**.