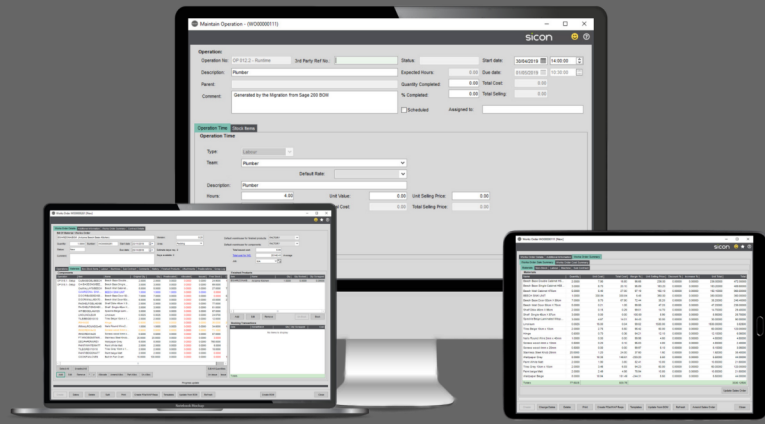




Provides enhanced functionality to the Sage 200 BOM module and is an ideal addition for clients in manufacturing.



Works Order Processing for Sage 200

Key Product Functionality

- Create Works Orders from the standard Sage 200 BOM's with version control.
- Create Works Orders from WOP Templates.
- Allocated and issues stock with full Sage 200 traceability support.
- Add and remove components, labour and machine items.
- Allocate all component items or individual items and part allocate.
- Back flush process across linked Works Orders with traceable item support.
- Over-runs can be booked to stock without the need to add more components.
- Uses standard component costing method for accurate cost roll-up.
- Add non-stock items to works orders for sub contract costs.
- Option to explode multi-level BOM's into a single Works Order list.
- Works Order stock shortages can be identified by report and are included in the material planning routine.
- Sage stock transaction history shows WOP issues and bookings.
- Link works orders to Jobs for rolled up costing of complex builds.
- Integrates with the Sicon Barcoding & Warehousing module for picking of Works Orders.

Estimating

- Estimates can be built up in the same way as a Works Order from a Sage 200 BOM or from scratch.
- Add components, labour, machine, comments and non-stock costs to create accurate estimated finished products costing.
- Future buy prices can be entered into the estimates if different from the current buy prices in Sage.
- Works Orders, Jobs or both can be created from an Estimate.
- Create and link an estimate to a sales order quotation.
- Quotation pricing can be derived from selling prices for components or from a mark-up on the cost of the works order elements.

Licencing Summary

Installed and maintained within Sage 200, using Sage 200 user licences with no Sicon specific user licences required.

Reports are designed within Sage 200 using the built in Sage 200 report designer, meaning they can be amended to provide custom versions of the reports.

Written within the Sage 200 development environment using the Sage business objects and utilising the latest Microsoft technologies for user interface.

When Sicon WOP is installed, the Sage features are updated and these can be added to the Sage user menu's using the Sage System Administration tools.

Available to all Sage 200 users across all Sage companies at no extra cost.

No Sicon user licences required.

Find out more....

To find out more about Sicon Works Order Processing, please contact your Sage Business Partner or contact Sicon direct on **01284 722850**.