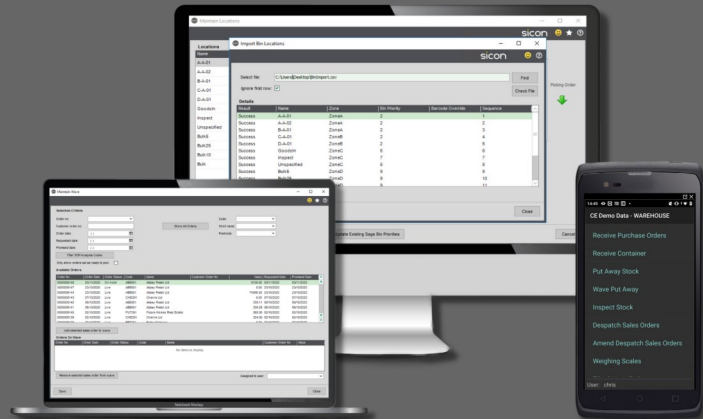




Real-time integration with Sage 200 stock and order processing modules.



Barcoding & Warehousing for Sage 200

Key Product Functionality

- Integration with Sage 200 and the Sicon modules is in real-time, with the handheld devices communicating directly with Sage 200 using Web API technology. This means there are no external databases to setup and maintain, and no data to synchronise or go out of synchronisation.
- Will run on any Android: Based on an Android operating system interface, Sicon have provided all the standard functionality required in a typical Sage 200 customer warehouse in an intuitive, highly functional interface.
- Being Android based you can use this application on very cheap Android based devices from phones to larger tablets, or choose a more expensive ruggedised devices with built in 1d or 2d barcode scanners, cameras, trigger grips etc.
- With a high level of functionality across the Sage 200 and Sicon modules, and a great range of devices available to choose from, this solution will appeal to a very broad range of client requirements.
- Receive purchases orders, and put away into existing or new bins.
- Pick & despatch sales orders.
- Issue & return stock to internal/jobs.
- Pick stock for Sicon Works Orders & Kits and build when pick complete.
- Pick stock for Sicon stock transfer (Sicon Service and warehouse replenishment).
- Add 'found' stock.
- Write off damaged stock.
- Complete a Stock take for both traceable and non-traceable items.
- Transfer stock in the warehouse, even if it is allocated.
- Allocate received stock to Sales orders using back to back or Sicon pre-allocations processing.
- The Sage 200 report designer supports many barcode formats as standard.
- Layouts are provided in the Sage 200 report designer to:
 - Print barcode labels at goods-in.
 - Print warehouse bin location labels.
 - Print barcodes on purchase orders, sales orders, job sheets and works orders.
- Additional license required per barcode device.

What you will need to provide:

- Wireless Network covering your warehouse area(s).
- Your chosen handset hardware options.

Handheld device options are endless but here are some examples of what is available:

Please refer to the Sicon Barcoding & Warehousing Help & User Guide for more information.

- Low cost option: e.g. Samsung Tab A6 (Android) plus rugged case, with JM Prime S700 Bluetooth trigger scanner. Total around £160
- Ruggedized option: e.g. JM Prime CM-2 (runs Android 11) at around £540.

Licencing Summary

The Sicon Barcoding & Warehousing module requires a licence for the module and each named Sage 200 & external App user.

Installed and maintained within Sage 200.

Reports are designed within Sage 200 using the built in Sage 200 report designer, meaning they can be amended to provide custom versions of the reports.

Written within the Sage 200 development environment using the Sage business objects and utilising the latest Microsoft technologies for user interface.

When Sicon Barcoding & Warehousing is installed, the Sage features are updated and these can be added to the Sage user menu's using the Sage System Administration tools.

Available across all Sage companies

Find out more....

To find out more about Sicon Barcoding & Warehousing, please contact your Sage Business Partner or contact Sicon direct on **01284 722850**.

Why would you use a barcoding solution in your warehouse?

- Quicker and more accurate stock picking, resulting in fewer returns.
- Quicker and more accurate stock receipting, resulting in better stock accuracy.
- Real-time stock updates into Sage 200.
- Full integration with Sage 200 stock take for quick and accurate stock take, with no manual update of count

NB: The solution does not include the wireless network infrastructure or the hardware devices. These are up to each client to decide what they need and how best to implement it. We are happy to offer advice and recommendations where it is required. This document goes some way to suggesting some suitable options.

What will you need installed to make this work?

- Sage 200 installed with the Sage 200 Commercial modules.
- The Sicon Web API installed, (this is the same Web API required for Service Manager Mobile and Task & Contact Manager Mobile). NB: this will require a single Sage 200 Web User only license regardless of the number of handheld devices.
- The Sicon Barcoding App installed on the tablet.
- The Sage 200 add-on from Sicon for Barcoding & Warehousing.
- Your choice of tablet and printer hardware.
- Minimum Android Version 5.0
- A wireless network to cover the required area.

What do you need to get this module operational?

1. You can use the tablet application immediately once you have everything installed even if you don't have any barcodes on any of your products. It will give you real time updates directly into Sage 200 for each of the actions processed on the device. Barcoding your products will improve accuracy and speed of processing.
2. If you have barcodes for your products these can be imported into the Sage 200 standard barcode field. If you don't have specific barcodes for each product, our solution will simply use your stock item code instead. The supplied label layouts will look for barcode numbers in the barcode field, but if these are not available it will replace it with a barcode matching the stock item code.
3. You can import a list of bin locations for your warehouse and print barcode labels for each one. Chose a label size to fit your bin sizes from the extensive range available from Zebra or other label printer manufacturers.
4. If your products come in with supplier barcodes, then you can link these barcodes to your own stock items as you go. Alternatively, you can print your own barcode labels as you process each goods receipt or when you put away the stock items.
5. You are now ready to start using the Sicon Barcoding and Warehousing solution with barcodes.

Find out more....

To find out more about Sicon Barcoding & Warehousing, please contact your Sage Business Partner or contact Sicon direct on **01284 722850**.