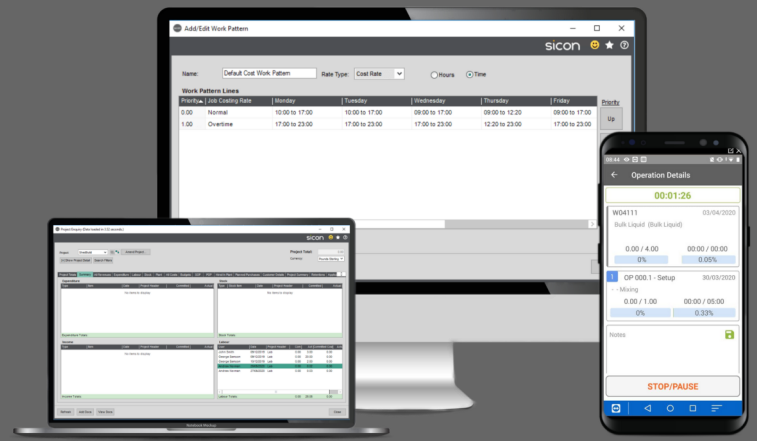




Sicon Shop Floor Data Capture allows real-time capture of operation progress and elapsed times.



Shop Floor Data Capture for Sage 200

Key Product Functionality

- Will run on any Android Device.
- Scan to start and stop elapsed time on any Sicon Operation.
- Option to capture time & attendance data at arrival / departure.
- Updates are real time to works orders and projects operations.
- Users can create a complete timesheet by simply selecting what they are doing throughout the day.
- Links to the common Sicon Timesheets.
- Layouts are provided in the Sage 200 report designer to: print route cards for works orders and Job operations.
- An ideal product for production environments.
- Additional User license required per SFDC user.
- What you will need to provide
- Wireless Network covering your warehouse area(s)
- Your chosen handset or terminal hardware options

What will I need installed to make this work?

- Sage 200 installed with the Sage 200 Commercial modules.
- The Sicon Web API installed.
- The Sicon SFDC Add-On in Sage.
- The Sicon SFDC App installed on the tablet.
- Sicon Manufacturing or Sicon Projects installed

Note: Sicon SFDC does not include the wireless network infrastructure or the hardware devices. These are up to each client to decide what they need and how best to implement it. We are happy to offer advice and recommendations where it is required.

Licencing Summary

The Sicon SFDC module is installed and maintained within Sage 200.

The Sicon SFDC App requires a licence for each named external App user.

Reports are designed within Sage 200 using the built in Sage 200 report designer, meaning they can be amended to provide custom versions of the reports.

Written within the Sage 200 development environment using the Sage business objects and utilising the latest Microsoft technologies for user interface.

When Sicon SFDC is installed, the Sage features are updated and these can be added to the Sage user menu's using the Sage System Administration tools.

Available to all Sage 200 users across all Sage companies at no extra cost.

Find out more....

To find out more about Sicon Shop Floor Data Capture, please contact your Sage Business Partner or contact Sicon direct on **01284 722850**.